



15 Wimborne Close

Epsom, KT17 4DP

£1,795 Per Month



****Newly Decorated Throughout & New Flooring **** Thomas & May is delighted to offer this lovely two bedroom ground floor maisonette with its OWN PRIVATE GARDEN accessed from both the kitchen and lounge. Located in a quiet cul de sac close to Epsom town centre with all its shops, local amenities and excellent rail links to London. Accommodation comprises lounge, fitted kitchen, two double bedrooms and a family bathroom. The property also benefits from a private garden and garage.



Entrance

Front door leading to entrance hall, storage cupboard, door leading to:

Kitchen

Side aspect double glazed window, rear aspect double glazed door opening onto patio and rear garden, range of wall and base units, roll edge worktop, sink, integrated gas hob with extractor fan over, integrated oven, integrated fridge/freezer, space and plumbing for washing machine, power points, part tiled walls, tiled floor.

Living Room

Rear aspect double glazed window, rear aspect double glazed door, feature fireplace, radiator, power points.

Bedroom 1

Front aspect double glazed window, radiator, power points, built-in wardrobe.

Bedroom 2

Front aspect double glazed window, radiator, power points.

Shower Room

Side aspect double glazed frosted window, three piece suite comprising low level wc, vanity unit with inset sink, quadrant shower cubicle with power shower, tiled walls, wood effect flooring.

Outside

Rear Garden

Laid mainly to lawn, patio area, gate giving side access.

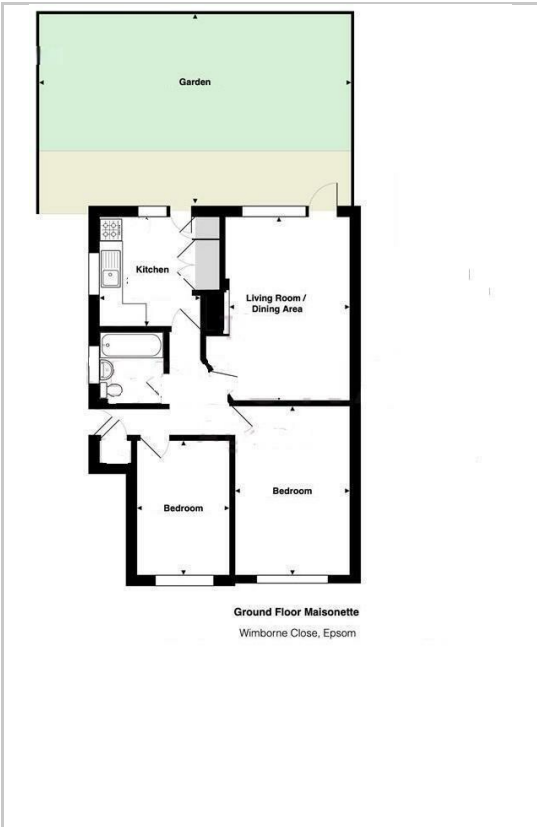
Garage En Bloc

Council Tax Band C

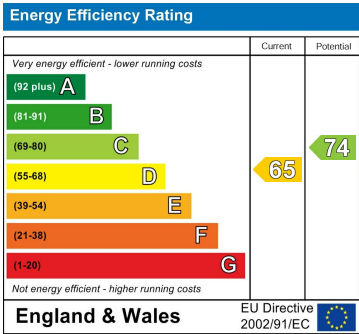
Area Map



Floor Plans



Energy Efficiency Graph



These particulars, whilst believed to be accurate are set out as a general outline only for guidance and do not constitute any part of an offer or contract. Intending purchasers should not rely on them as statements of representation of fact, but must satisfy themselves by inspection or otherwise as to their accuracy. No person in this firms employment has the authority to make or give any representation or warranty in respect of the property.